

Shanghai United Imaging Healthcare Co., Ltd.



**UMI** *Vista*  
PET-CT SYSTEM



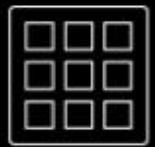
## **UMI** *Vista*

A new-generation molecular imaging system with outstanding physical performance and advanced clinical applications. It combines a 84-crystal-ring digital PET and a 160-slice to support one-stop functional and anatomical imaging and provides high-quality fused images for diagnosis.

- **84-crystal-ring integrated light guide digital PET detector**
- **160-slice Cardiac CT**

uEXPLORER Inside

# Crystal Size Matters

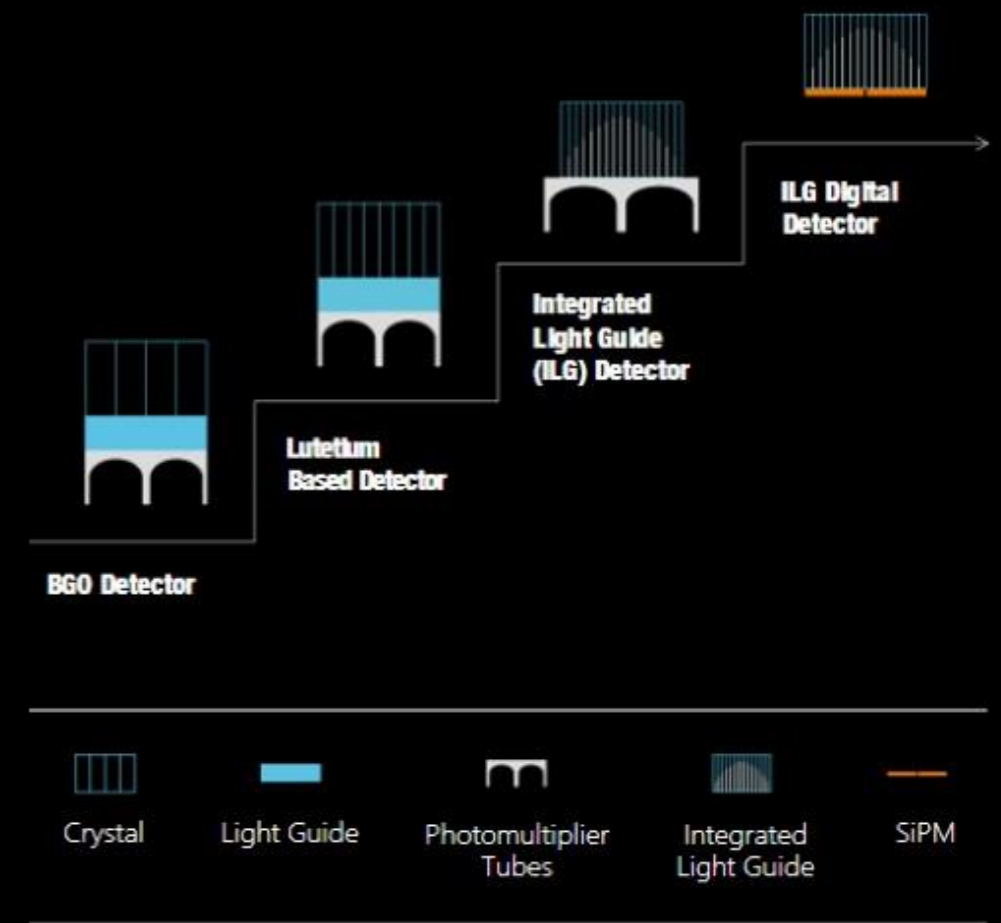


**2.76mm**  
crystal pixel size



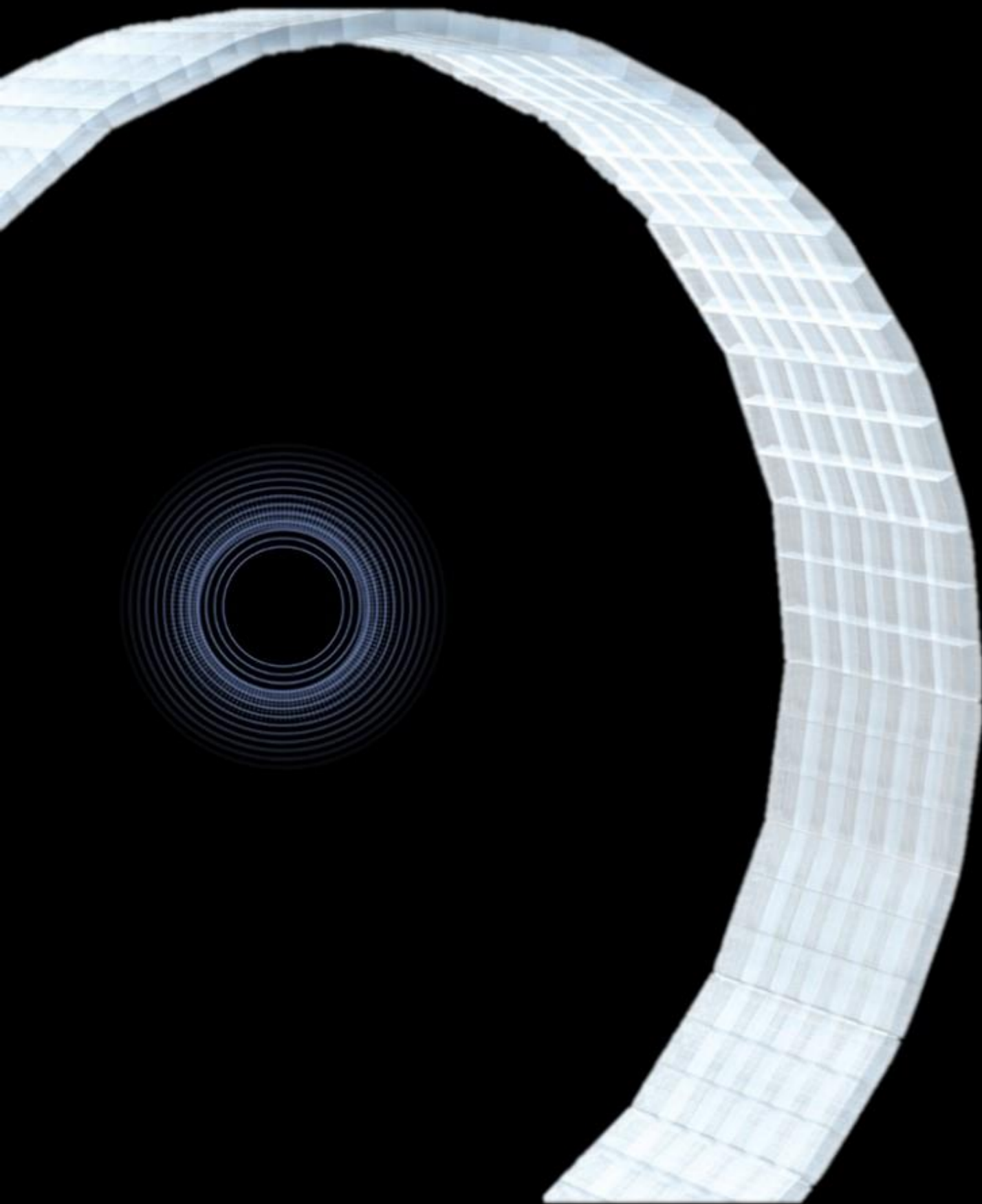
**31%**  
finer crystal element size<sup>1</sup>

*1. Compared to 4 mm crystal dimension*



PET Detector Milestones





# **Large Axial FOV**

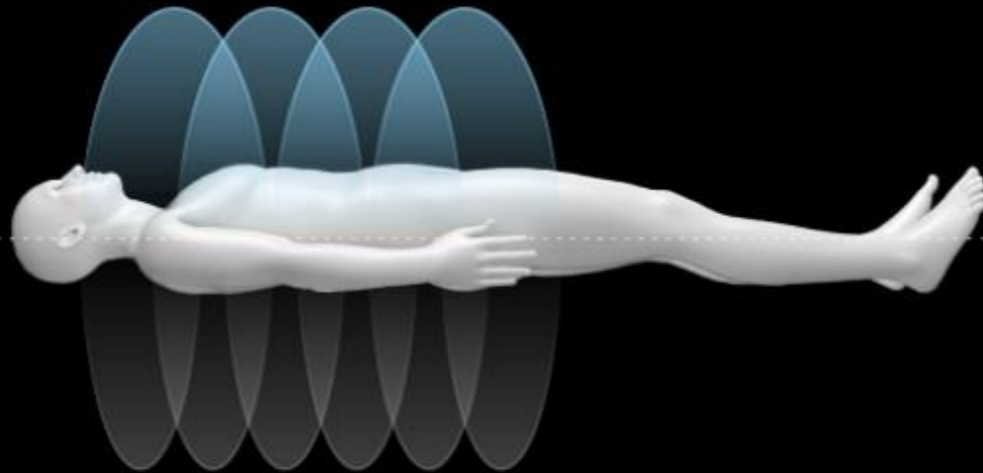
**Expand Clinical Efficiency**

## 24cm PET Axial FOV

*High-speed Scanning*

uMI  
4 beds

Conventional  
6 beds



- Large axial FOV and high system sensitivity enable a whole-body scan in 4 bed positions within 8 minutes
- High speed scanning increases patient throughput
- High sensitivity boosts data acquisition and enables low-dose PET scans

# uCare iQC

*Source-free Quality Control*



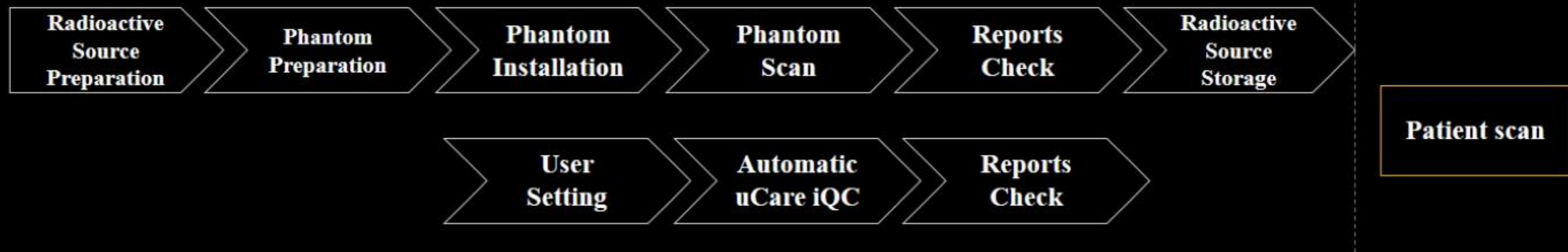
## No radioactive Source Required

- ✓ Quality check based on intrinsic radioactive properties of Lutetium present on LYSO detectors
- ✓ Lower storage condition requirement for sources
- ✓ No more need for tedious routine tasks of radioactive source preparation and phantom scan
- ✓ Reduces staff's exposure to radioactive source



## One-stop Quality Control

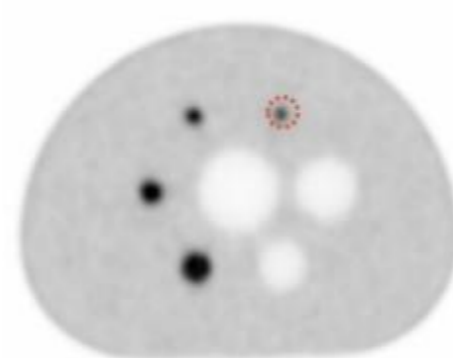
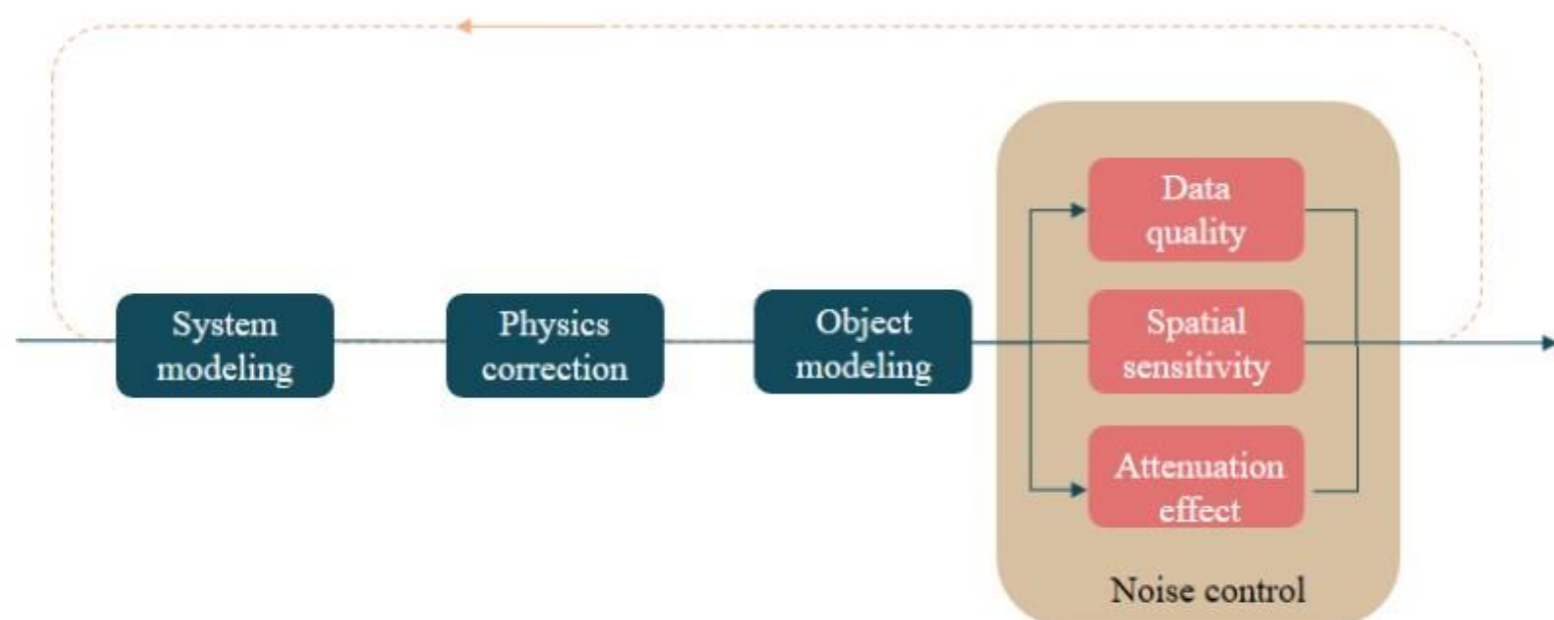
- ✓ Daily scans for background count rate, voltage power supply, temperature, and humidity
- ✓ Weekly check of LUT drift, energy drift, TOF check and Cmap
- ✓ Automatic QC based on the user's settings



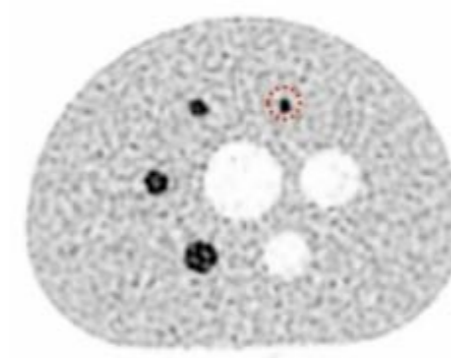


# HYPER Iterative

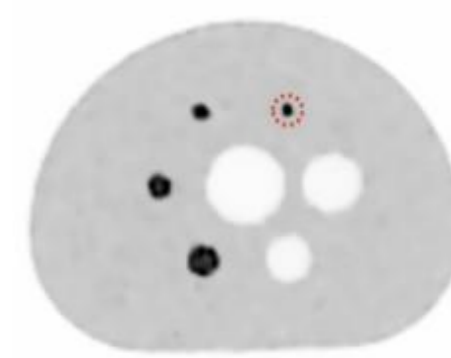
*Precise Noise Control within Iterations*



OSEM+TOF+PSF  
Iteration=1



OSEM+TOF+PSF  
Iteration=25



HYPER Iterative

	OSEM+TOF+PSF Iteration=1	OSEM+TOF+PSF Iteration=25	HYPER Iterative
CR	52.4%	100%	99.3%
SNR	11.4	4.8	22.7

- HYPER Iterative, the regularized iterative reconstruction, implements noise control process into every single iteration. Simultaneous improvement of lesion detectability and quantitative accuracy is now possible.

**Simultaneous** x1.9 contrast recovery improvement  
x2 signal to noise ratio improvement

# 160-slice CT System

*High-quality Diagnostic CT Imaging*

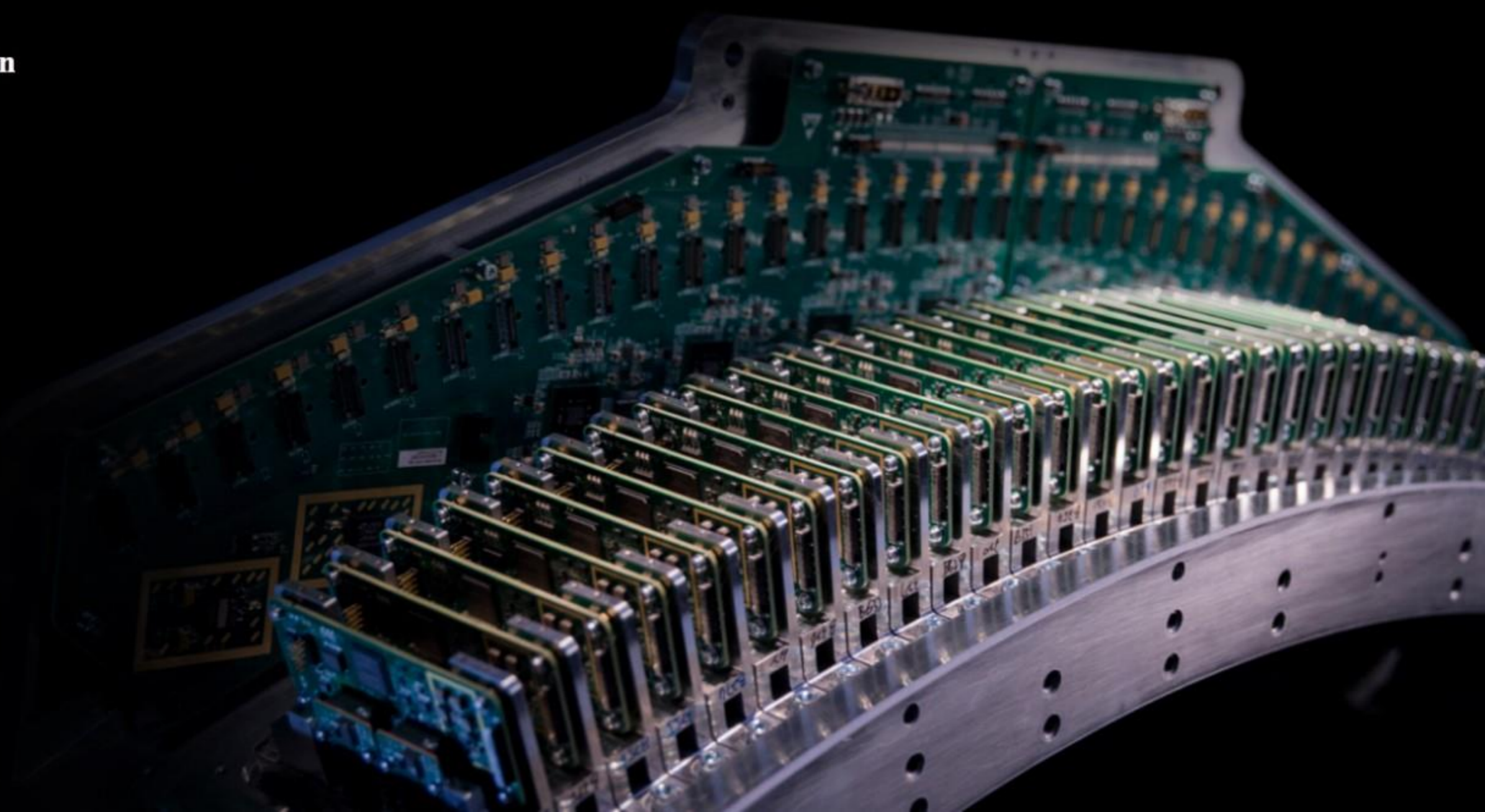
**0.3s/rotation**  
**Rotation Speed**

**0.25mm**  
**Isotropic Spatial Resolution**

**0.5mm**  
**Acquisition Element**

**1024 x 1024**  
**Reconstruction Matrix**

**70kV**  
**Scan Mode**





# One-stop Cardiac Imaging and Analysis

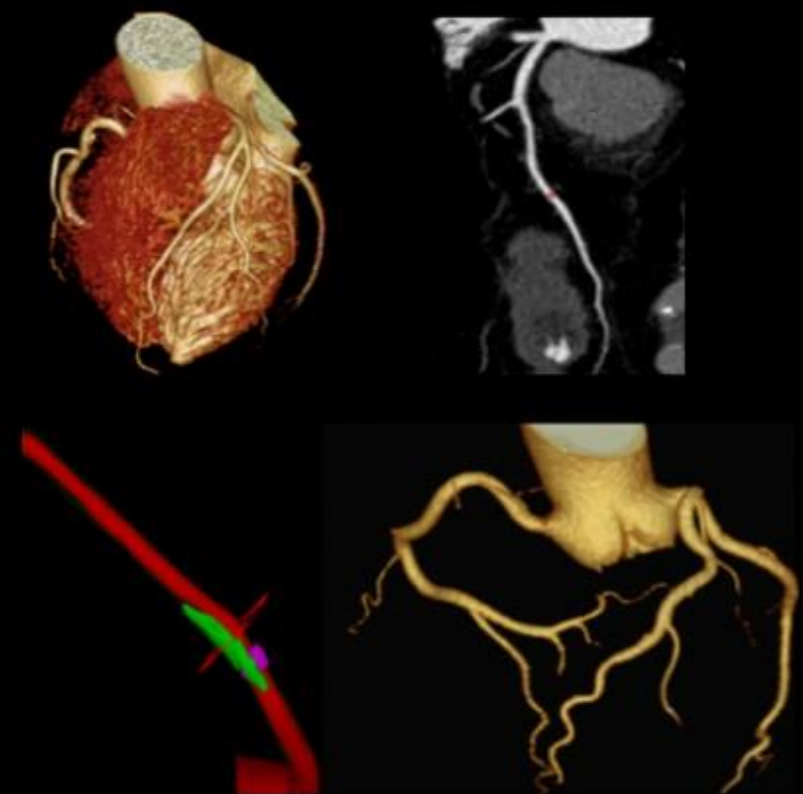
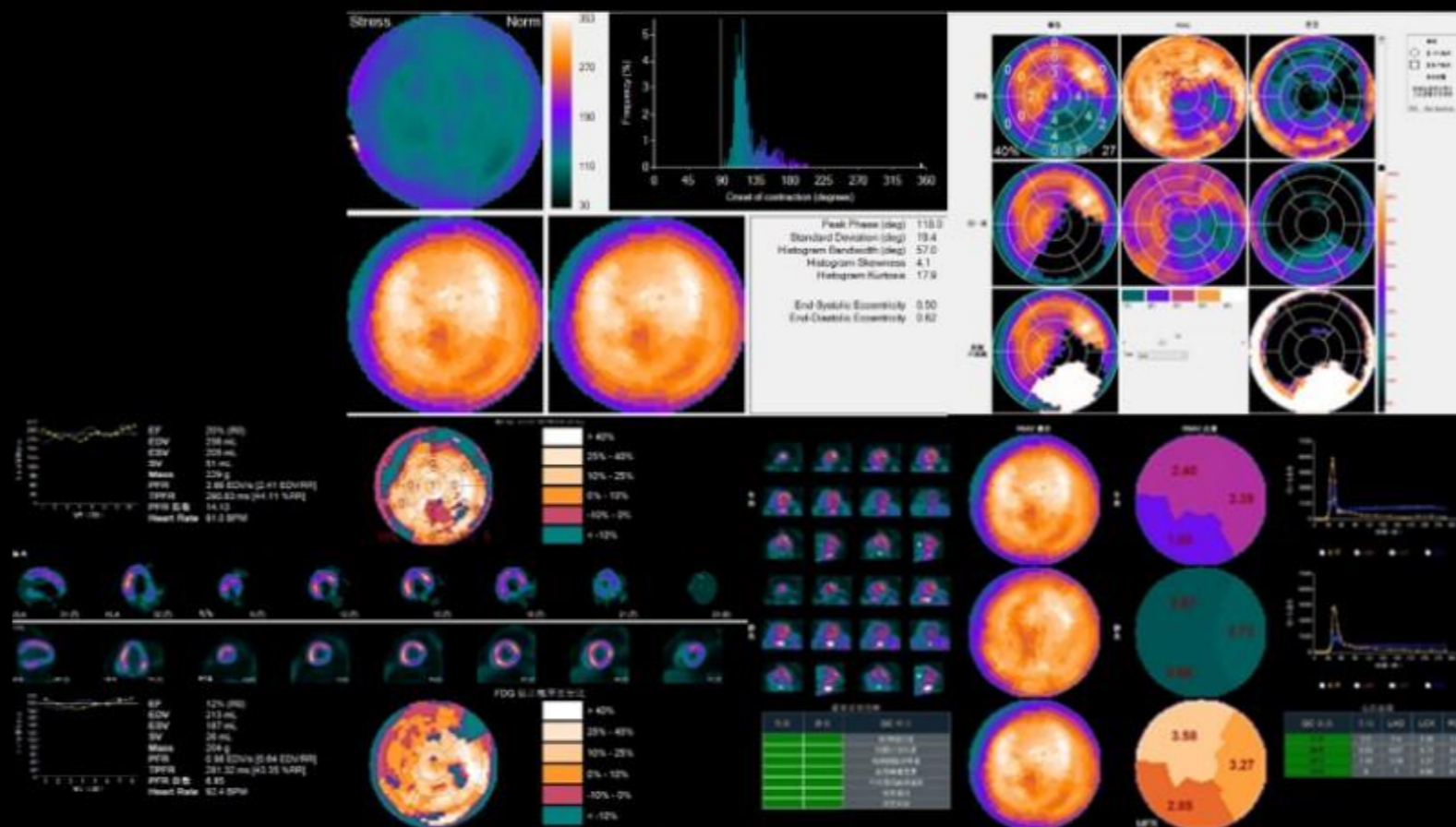
*Both for PET and CT*

## PET MPI Imaging and Analysis

- Cardiac function
- LV dyssynchrony analysis
- Perfusion FDG match/mismatch analysis
- CFR

## Coronary CTA Imaging and Analysis

- Automated vessel extraction
- Plaque/stenosis analysis
- Cardiac function analysis
- VR/CPR visualization



# PASSION for CHANGE

Shanghai United Imaging Healthcare Co., Ltd.  
Copyright © Shanghai United Imaging Healthcare Co., Ltd. All Rights Reserved.

Shanghai, China  
2258 Chengbei Rd., Jiading District, Shanghai, 201807.  
Email | [info.global@united-imaging.com](mailto:info.global@united-imaging.com)  
Business Consultation | +86 (21) - 67076666  
After-sales Service | 4006 - 866 - 088  
To learn more, visit <https://www.united-imaging.com>

